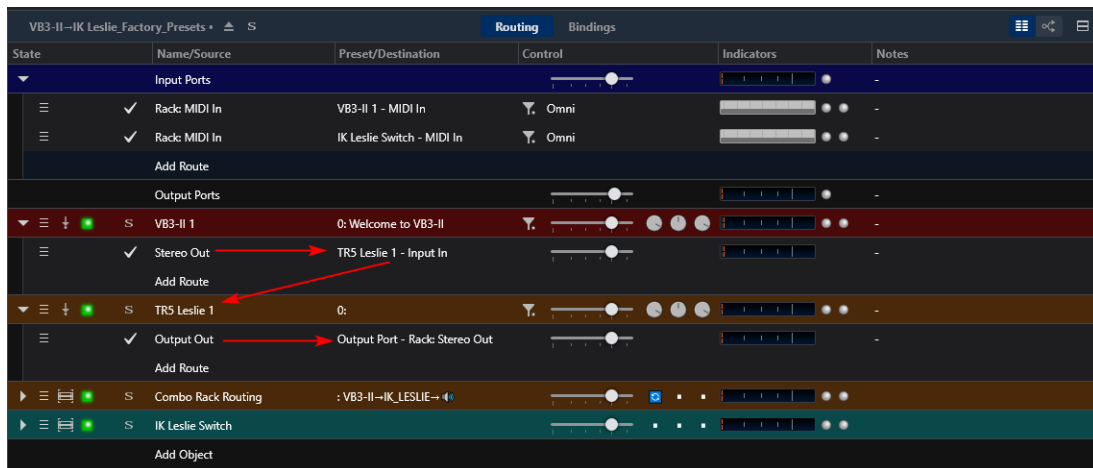


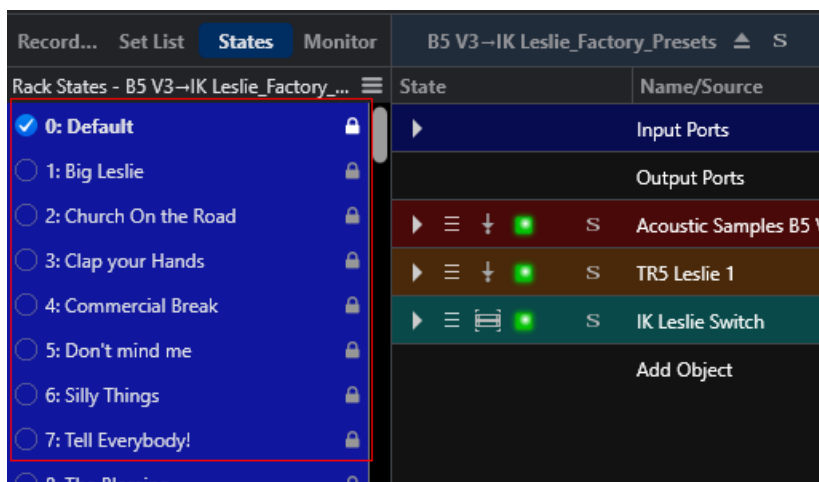
## Cantabile Performer© Organ → Leslie Combo Racks Tutorial

These new combo racks for popular VST organ plugins and the IK T-Racks Leslie plugin are internally routed in the same rack and the combination of the settings from the 2 plugins are saved as discreet selected state behaviors data **and** in some cases entire bank data to the rack file itself. This allows the combinations of plugins to have a single name for patch combinations and preset wiring to more easily manage combination plugin patches like this. All held captive in a shareable rack. The factory patches are loaded into the state presets and locked to preserve the originals without the IK Leslie added. I will start with an explanation of the internal routing in the rack.

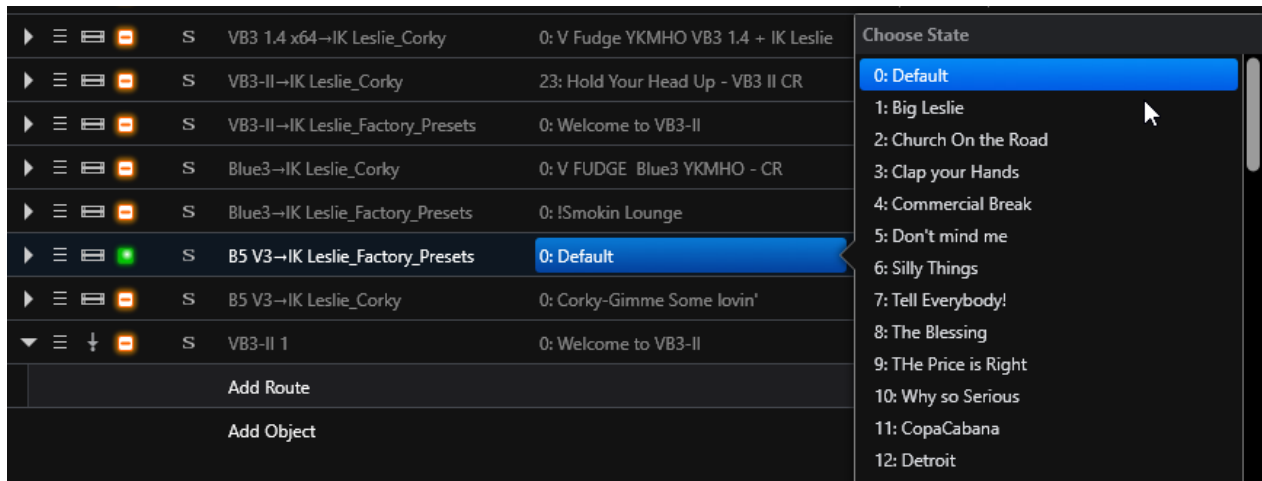


The default routing is from the organ plugin to the IK Leslie input and from it's output to the rack out. This is the same whether the IK Leslie is bypassed or not. The default configuration of the factory preset patches is always set to full presets with rotary on. The racks have CC1 Mod Wheel set to control the rotary speed & there is a IK Leslie switch adapter included in the rack that converts the center of the wheel travel to control the Leslie brake switch. **All preset patches load with the swell CC11 set to zero to prevent surprises and will be quiet so remember to pedal up to get the full volume.**


The rack states act as the preset storage for the combo patches and are seen in the states pane when in rack edit mode



or in the hamburger menu on the rack at song level.




Next is how to edit and manage the presets. They are delivered locked to avoid overwriting them on a state change where you move controls on the VST during use (a distinct possibility when using states).

To ease the complicated editing process there is automation via bindings and triggers built in to each rack that does a lot of the mundane navigation commands reducing the clicks needed to get set up to edit. To open a rack state preset for editing use the  button on the rack at song level.




Clicking it does the following things:

- It opens the rack for editing
- It sets the view to routes tab with the rack states pane open
- It unlocks the currently loaded State to allow editing
- It opens the GUI's for the organ and the IK Leslie to edit them

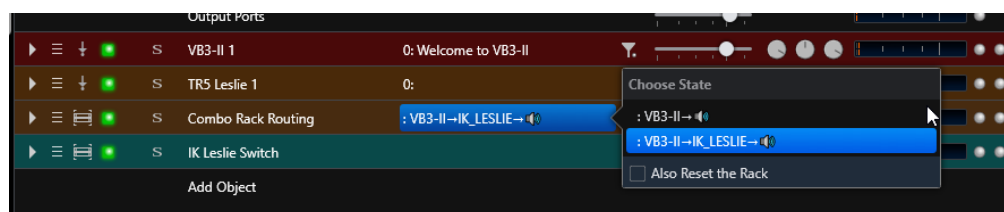
The  button on the rack slot opens the 2 plugin GUI's inside the rack at song level for a quick check without opening the rack but you have to manually close them when done.

The  button on the rack slot opens the rack to edit and ready to add a new rack state preset. It will

- It opens the combo rack for editing
- It sets the view to routes tab with the rack states pane open
- It opens the Add State dialog box ready to enter a name and create the new preset state
- It opens the GUI's for the organ and the IK Leslie to edit them

We'll start by editing the first Rack State Preset. We've already selected the first state and it is loaded. When we click the  button it opens the rack, sets the views, opens the GUI's for the 2 plugins and unlocks the state to make it ready to set the routing, (with the IK Leslie either included or bypassed)

Set the routing on the embedded Combo Rack Routing rack using the hamburger menu. It sets the bypass for the IK Leslie and the internal rotary of the organ plugin.



& then simply edit the controls on the IK Leslie plugin & the B5 or other organ plugin you are using.



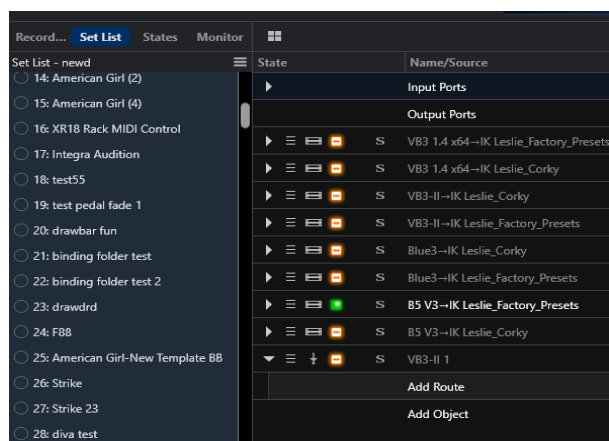
Now you can edit the 2 plugins and blend them to taste.

When done always use the F10 key to save the changes.



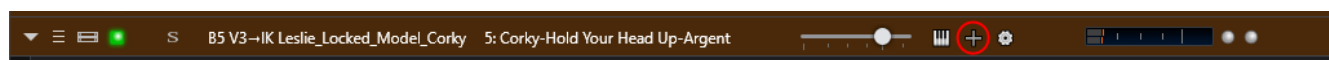
It does the following when you press it.

- It locks the state in the rack updating that state when it does
- It saves the rack
- It closes the 2 plugin GUIs
- It closes the rack editor and returns you to song level with the set list pane open on the left.

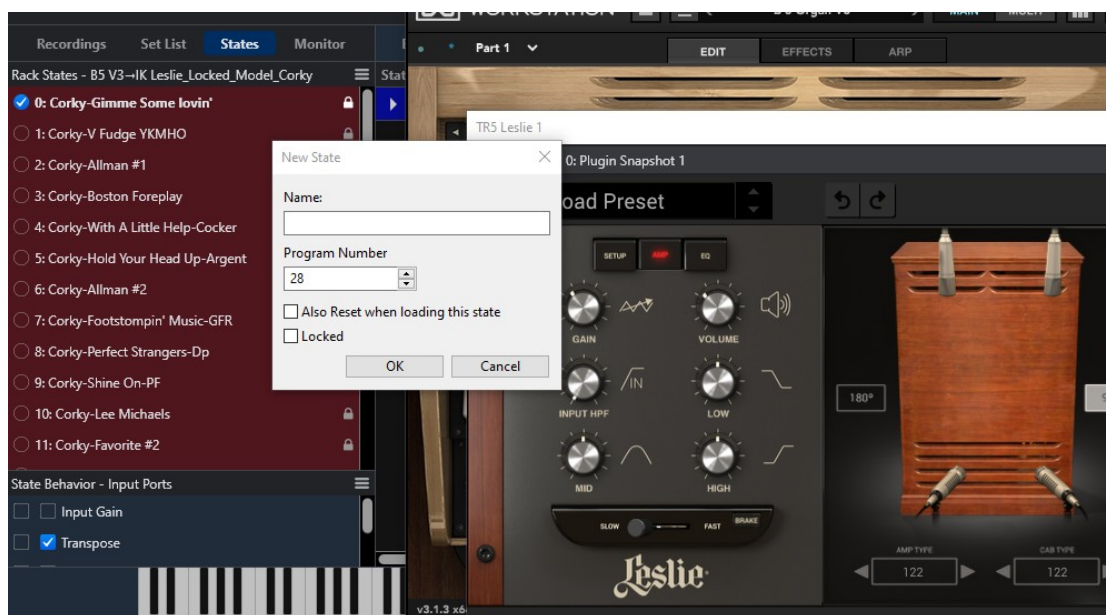


Next is the procedure for adding a new Rack State Preset to the combo racks. I'm using the Acoustic Samples B5 as the organ in the example.

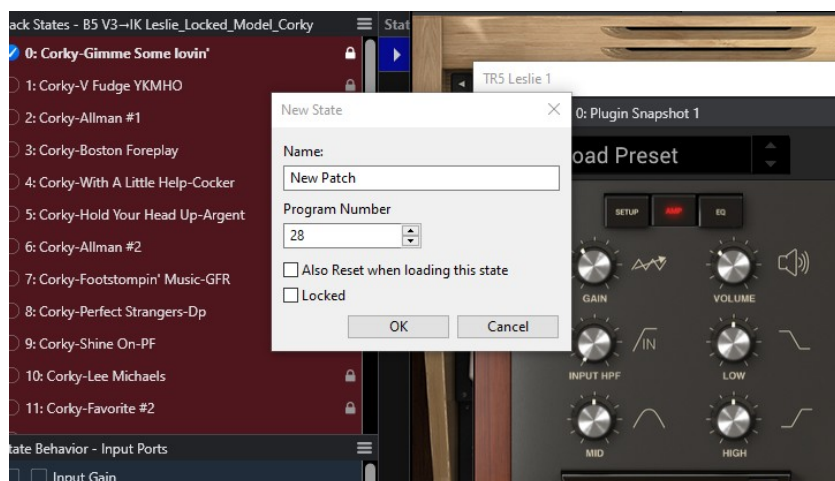
First you select the rack state preset you want to use as a base for the new preset and click the **+** button.



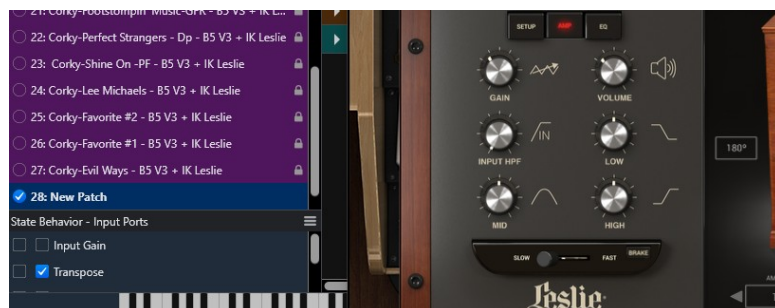
the rack editor will open with the GUI and the New State box open and ready to program



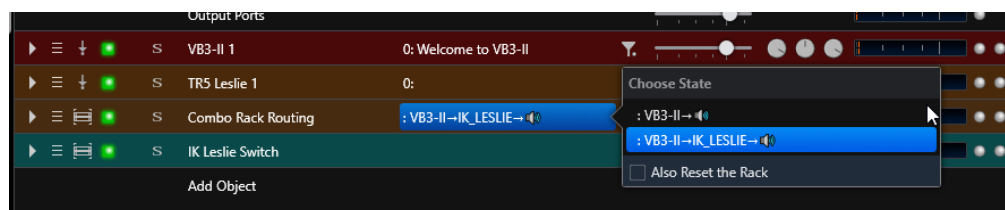
Name the new patch and click OK



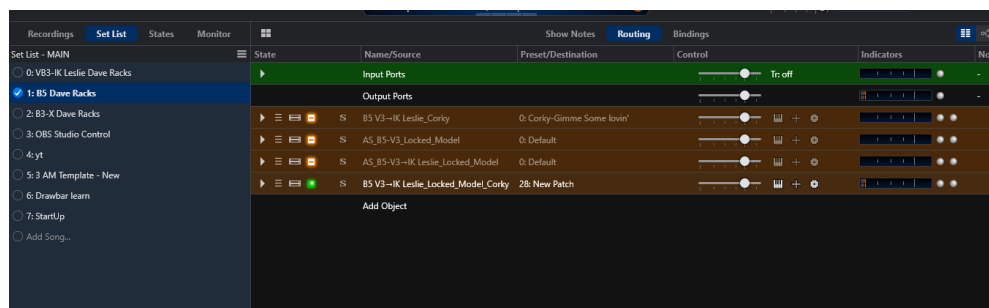
the new state will be established for editing



Set the routing on the embedded Combo Rack Routing rack using the hamburger menu.

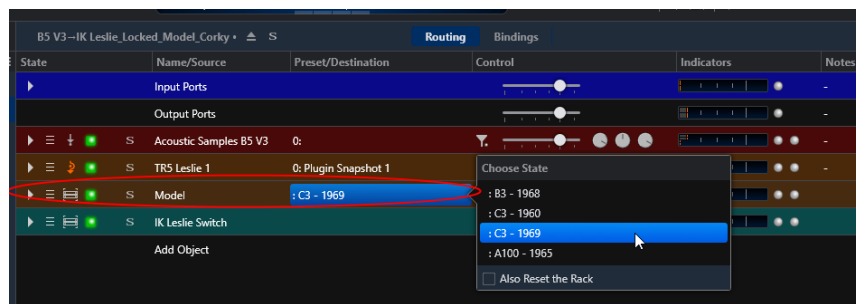


Do the programming on the plugins and when done press F10 to lock and save the rack state preset and return to the song level.

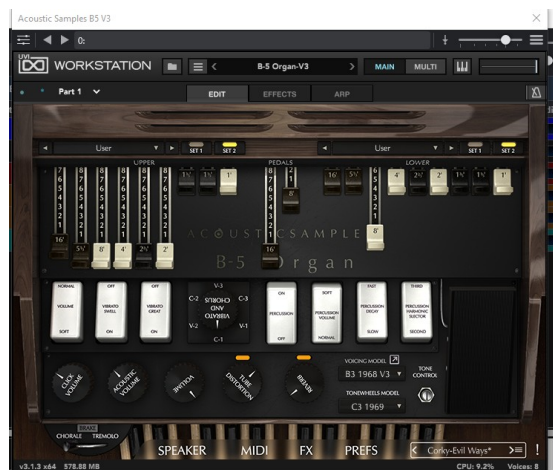
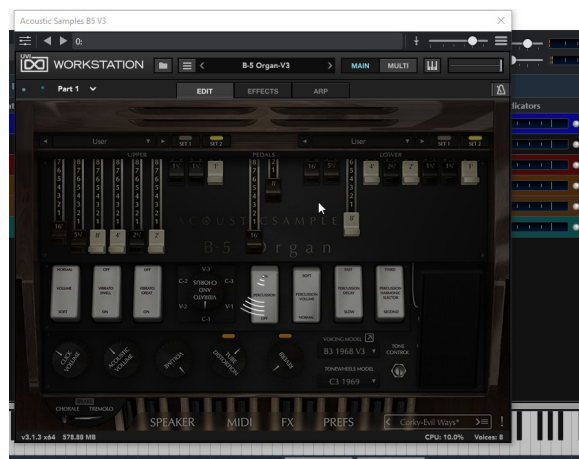


That covers how to use the new combo racks. They should be shareable if the user has the 2 plugins in the rack used. There will be 4 combo units where the organ plugin combines with the IK T Racks Leslie plugin and they are

This extra section is about the Locked Tone Wheel models made for the Acoustic Samples B5. The B5 takes a long time to load tone wheel sets or models making it hard to use in a live situation. To work around this there is a special embedded rack in the B5 locked model type racks. To change the model you open the rack for normal editing and navigate to the embedded rack that is marked for this purpose and select the rack state that is the tone wheel model you want. Just close the GUI when done and the B5 will keep that tone wheel set model till you manually change it again.



When you do it will open the GUI for the B5 so you can see that the model gets loaded fully before carrying on.



When done close the GUI and the rack and you're ready to go. Switching patches is very fast in this way.

This concludes the tutorial.

Enjoy!!

Dave Doré 2-1-2022